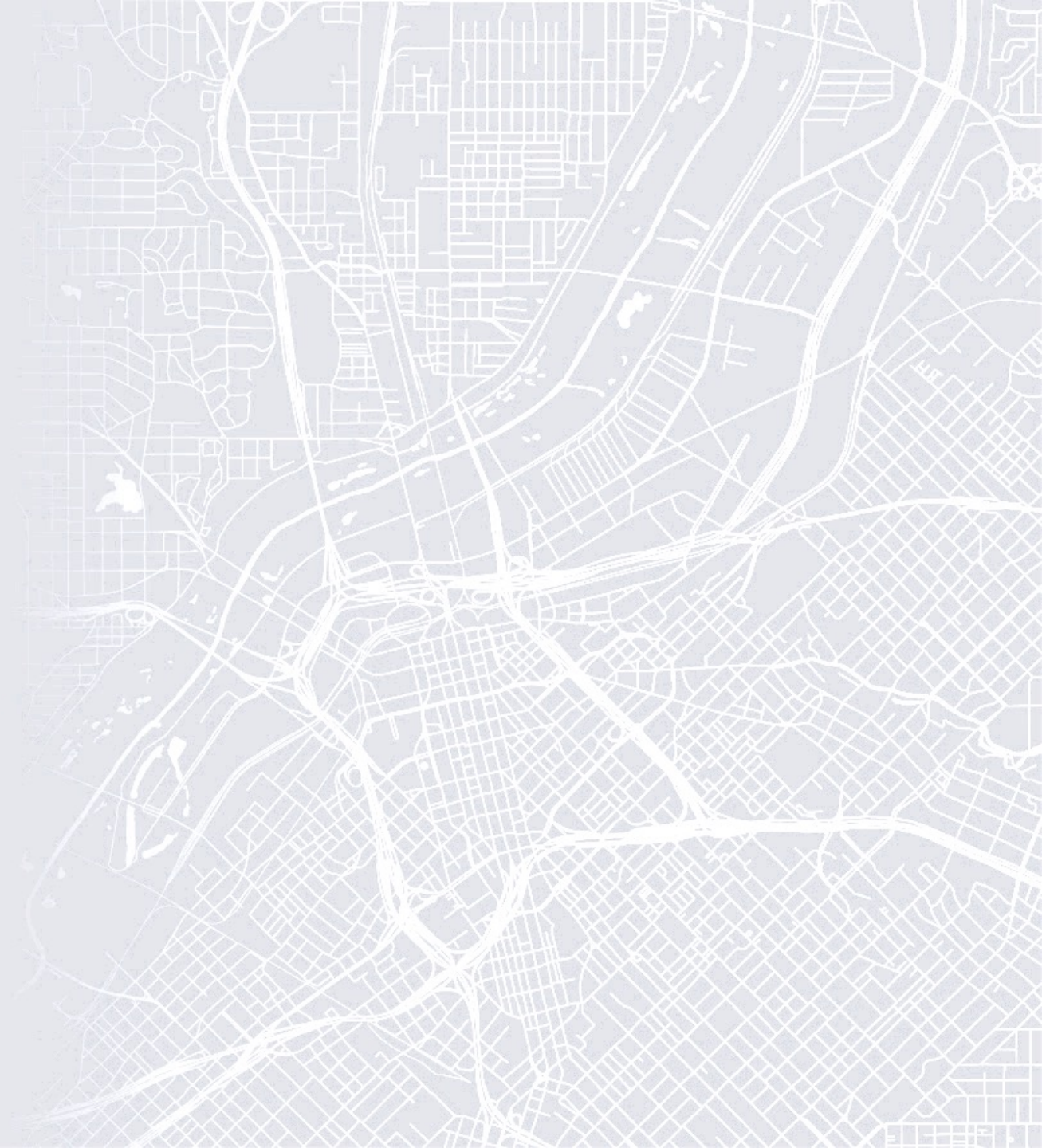


New Look & Feel

January Release 1/31/23



What's changing in January/February?

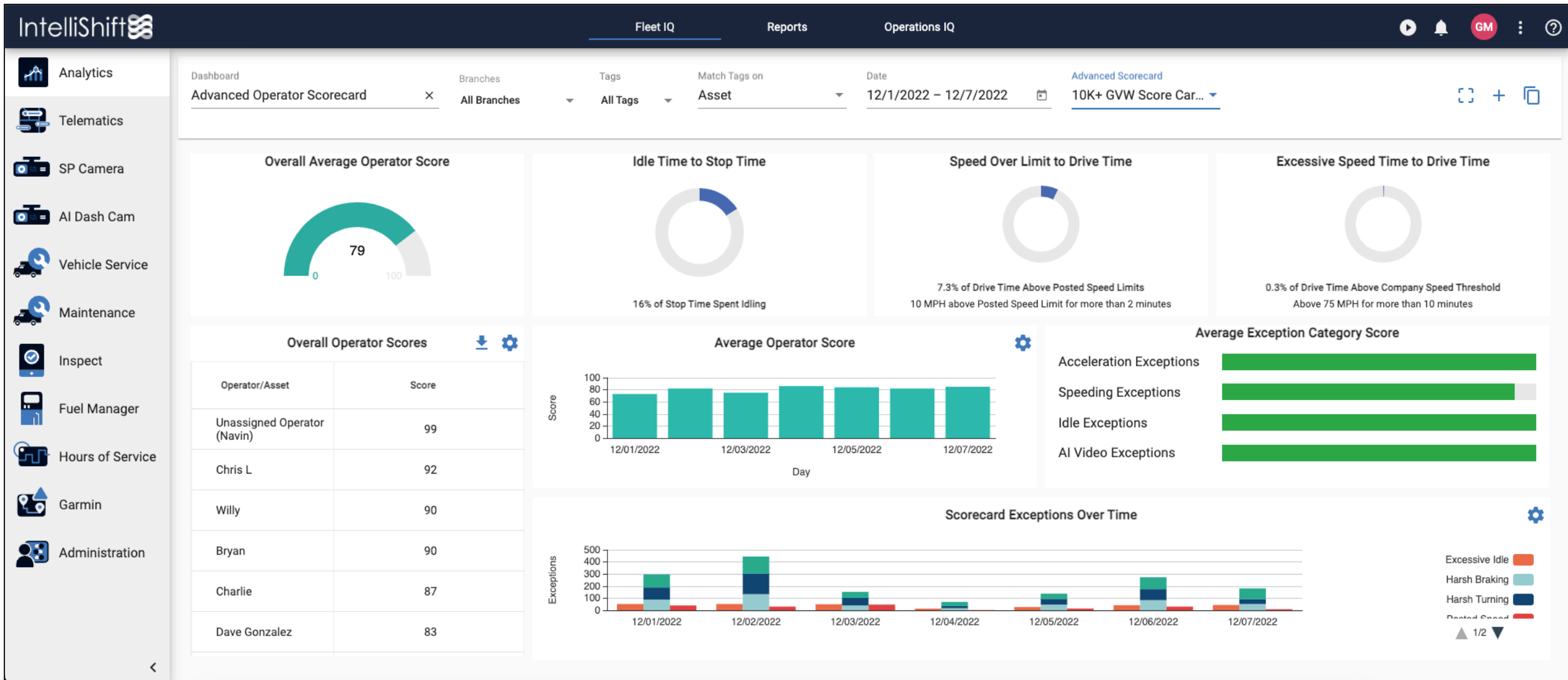
- New login screen
- New look & feel that represents a single platform
 - New color scheme
 - New product icons
- Consolidate navigation for all Analytics
 - Reports, Fleet IQ & Operations IQ
- Product name changes
 - Silent Passenger → Telematics
 - AI Video → AI Dash Cam
- Consistent Navigation
- Updated Dashboards (February)



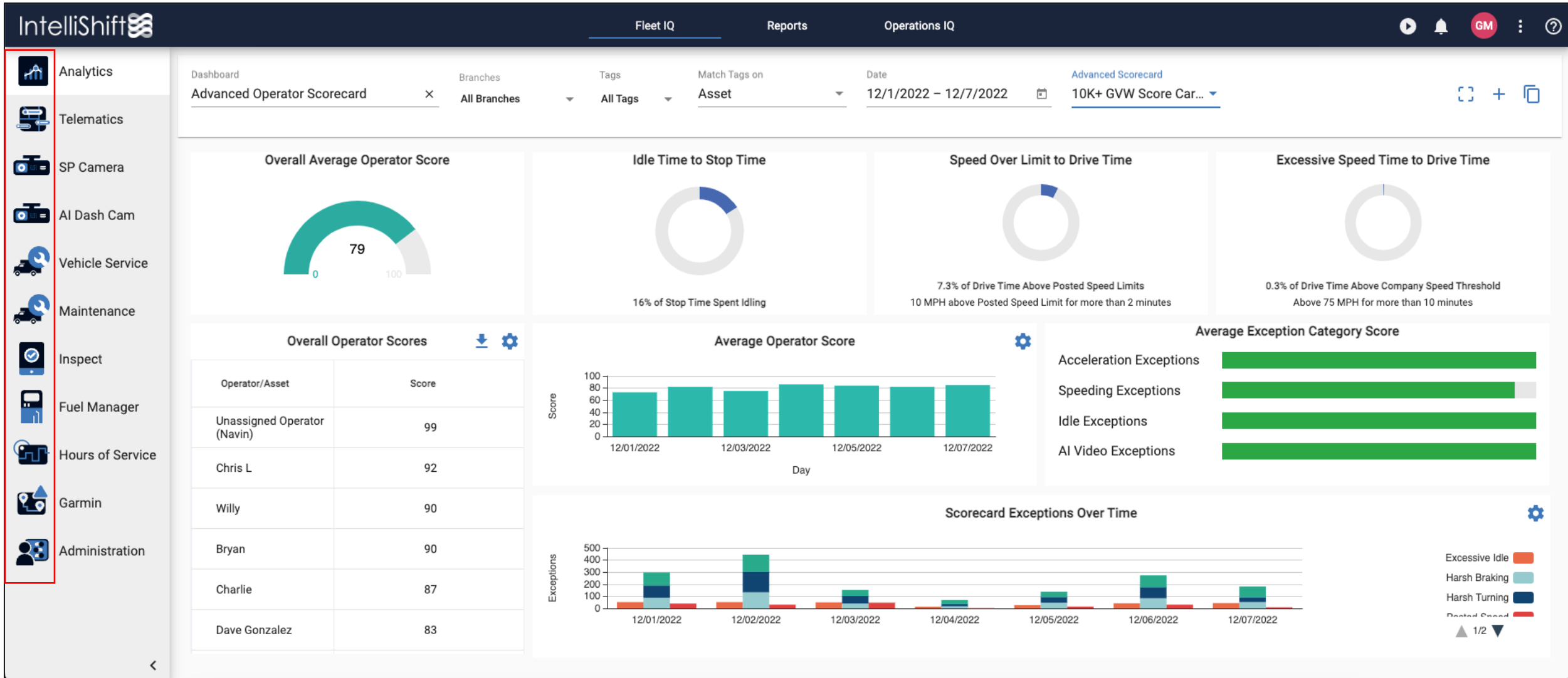
New login screen



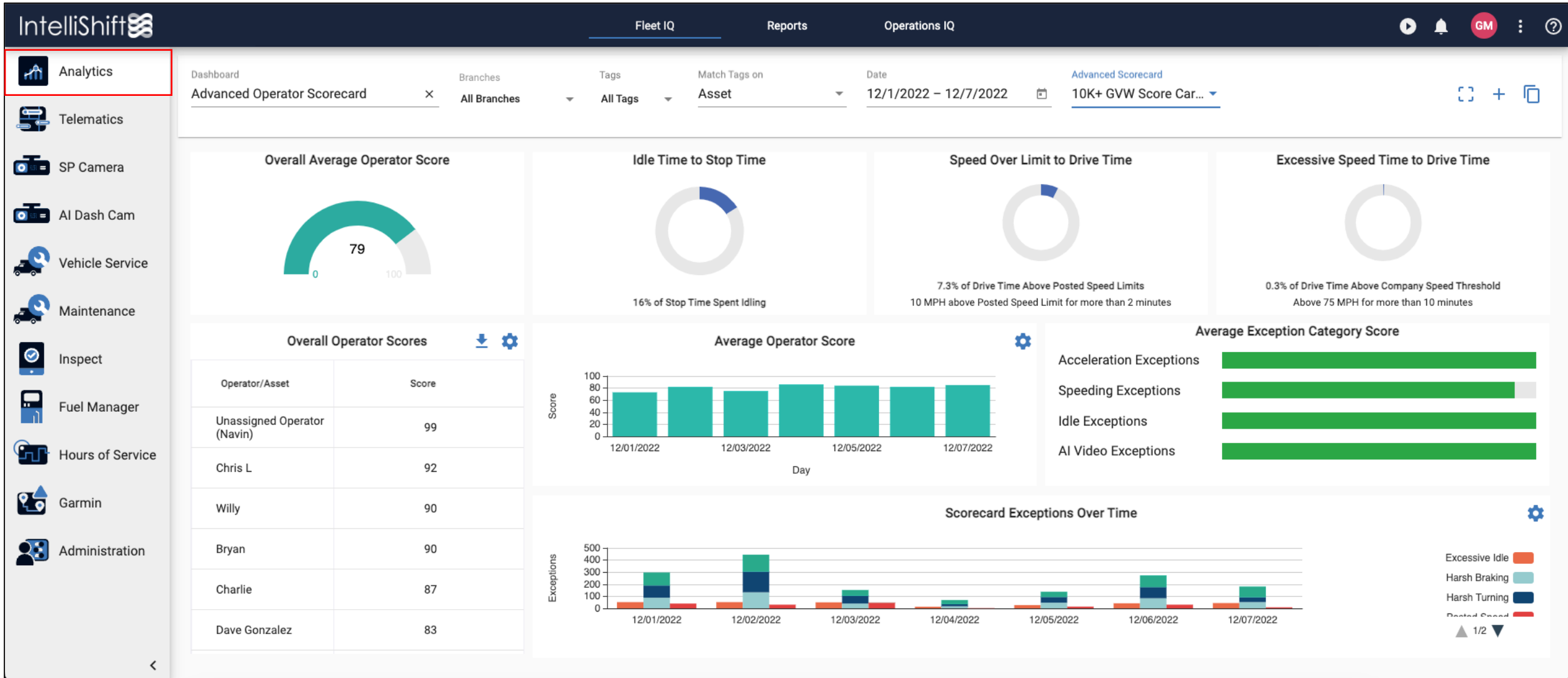
New Product look & feel



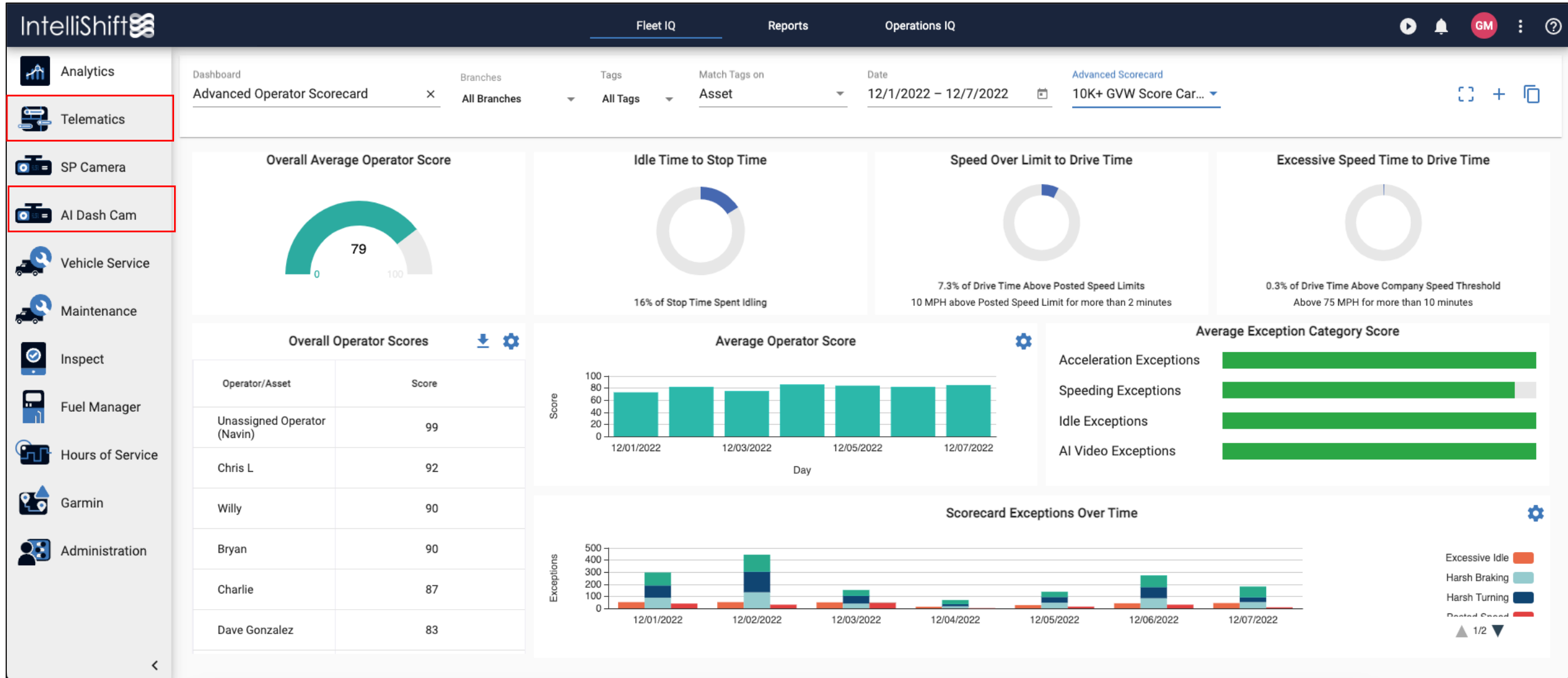
New Product look & feel



New Product look & feel



New Product look & feel



Consistent Navigation

The screenshot displays the IntelliShift dashboard with a navigation menu on the left and a main content area. The navigation menu includes: Analytics, Telematics, SP Camera, AI Dash Cam, Vehicle Service, Maintenance, Inspect, Fuel Manager, Hours of Service, Garmin, and Administration. The main content area is titled "Inspect / Dashboard" and features a "Date Range" dropdown set to "Last week". A navigation bar at the top of the main content area includes "Dashboard", "Templates", "Issues", "Inspections", and "Missed Inspections". The "Dashboard" tab is active. The main content area is divided into two sections: "Fleet Health" and "Issue Balance". The "Fleet Health" section contains a large red circle with the text "No Issues" and a "Missed inspections" widget showing "10" and "7 Total Assets". The "Issue Balance" section contains a line chart showing the number of issues over time from 11/27/2022 to 12/03/2022. The chart shows zero issues for all dates. The "Fleet Health" section also contains several widgets with the message "There is no data for this widget. Please adjust your filters and try again." The "Tools" section of the navigation menu includes "Form Builder".

Key KPIs: Dashboard

Exceptions: Issues, Missed Inspections

Details: Inspections

Tools: Form Builder

IntelliShift

Inspect / Dashboard

Date Range: Last week

Dashboard | Templates | Issues | Inspections | Missed Inspections

Fleet Health

No Issues

Missed inspections: 10 (7 Total Assets)

Issue Balance

Issues

11/27/2022, 11/28/2022, 11/29/2022, 11/30/2022, 12/01/2022, 12/02/2022, 12/03/2022