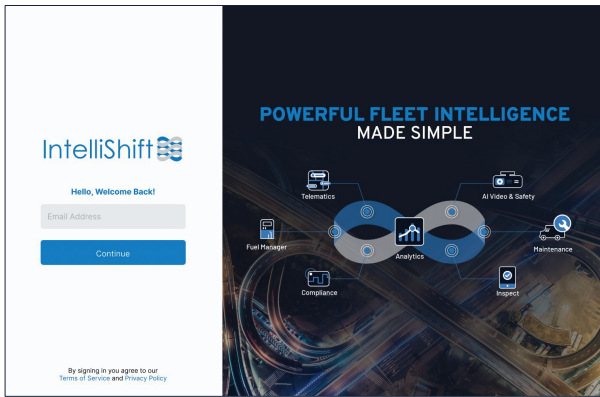


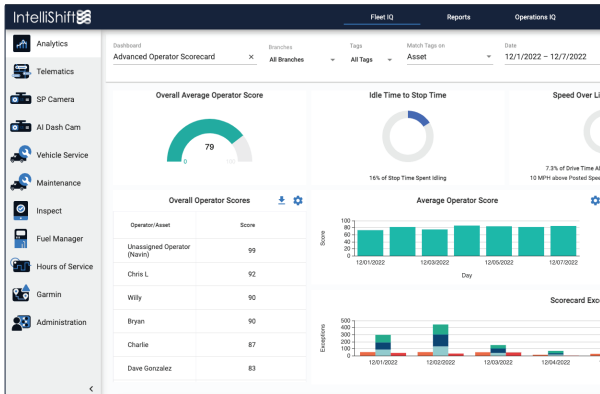
# IntelliShift's new look and feel

We are continuously improving the experience that you have working within the platform. Here's what to expect:

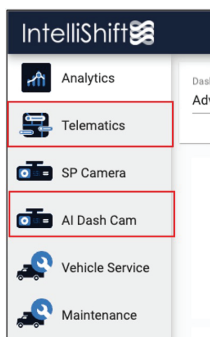
1



**New Login screen**



**NEW Color pallet and product icons**



**Name Changes**

Silent Passenger is changing to Telematics.

AI Video is changing to AI Dash Cam.

2

**New Analytics tab (Left Hand Nav)**

The Analytics Tab now houses Reports, Fleet IQ and Operations IQ.

No changes within Reports, Fleet IQ and Operations IQ.

3

**Telematics**

Fleet Status is changing to Asset Status. (Top Bar Nav)

Top navigation tabs order changed.

4

**Inspect**

Templates changed to Form Builder. (Top Bar Nav)

Top navigation tabs order changed.

5

**Fuel Manager**

Activity changed to Fuel Transactions. (Top Bar Nav)

Administration changed to Tool. (Top bar Nav)

6

**Maintenance (Formerly Fleet Maintenance)**

Fleet Maintenance changed to Maintenance. (Left Hand Nav)

Administration changed to Tools. (Top Bar Nav)

Top navigation tabs order changed.

7

**Settings**

Global Settings left hand navigation was removed and all functionality is in the Administration tab.

Company Settings is now a new top navigation item called Company Pin.

Tag Management is now under the top navigation Branch and Tags tab.

Garmin, SP Camera, Vehicle Service and Hours of Service had no changes.