

IntelliShift VG-800 Installation Guide With PTO Accessory Kit

Installation of your new device should be performed by a 12V certified technician or mechanic familiar with automotive 12V systems.

**Pro Tips:**

Before you get started, make sure to associate the IMEI number with the vehicle number. This makes it easier to activate on the IntelliShift platform.

Getting Started

Installation Tips

- The VG800 is paired prior to shipping and cannot be mixed at installation. These pairs will be shipped together in a plastic bag.
- These devices are also pre-assigned to specific vehicles by VIN number and cannot be installed in other vehicles.
- The assigned VIN number can be found on the sticker on the outside of the plastic bag, pictured here
- During initial installation, the vehicle should ideally be outside to ensure the best GPS signal. The devices may not report a location to the satellite if it is inside a garage or other structure.



OBD and JBUS cables/connectors

For vehicles with an OBDII style port (1996 or newer model years), our OBD connector is required for installation. The harness plugs directly into the vehicles OBDII port and into our device. The device can then be installed under dash as close to the windshield as possible.

For vehicles with a J-Bus style port we offer various types of plugs to suit your installation needs. The harness plugs directly into the vehicles J-Bus port and directly into our device. The device can then be installed under dash as close to the windshield as possible



Green Power Harness: Works with 9 Pin J1939 Diagnostic Plugs



Gray Power Harness: Works with 6 Pin J1708 Diagnostic Plugs

Installing the VG800 GPS device

For vehicles with a J-Bus style port we offer various types of plugs to suit your installation needs. The harness plugs directly into the vehicles J-Bus port and directly into our device. The device can then be installed under dash as close to the windshield as possible.



Pro Tips:

Before you get started, make sure to associate the IMEI number with the vehicle number. This makes it easier to activate on the IntelliShift platform.

1



Open the box and find the gateway device, cable and equipment

2



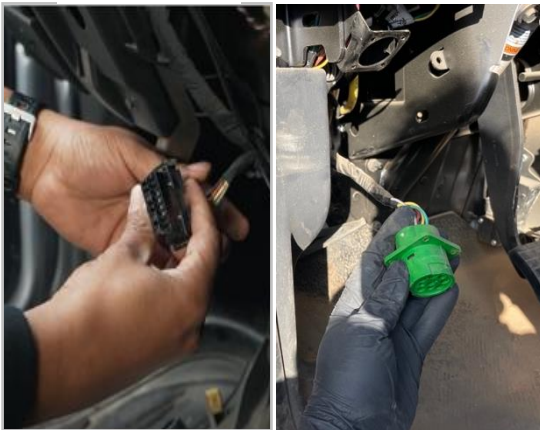
Locate Serial Number. Each Gateway (and Dash Cam) have been pre-assigned to a specific vehicle and must be installed in that vehicle only.

You can find the assigned Vehicle VIN number can be found on the sticker on the outside of the plastic bag.

Light Duty

Heavy Duty

3



Heavy duty Note, refer to your vehicles owners manual to confirm the type of connector.

With the engine off, locate the diagnostic port inside the vehicle.

4



The cables have a male, female port and gateway connector.

5

Connect the male port to the vehicles diagnostic port.

6

Connect the Gateway Connector into the Gateway

7

Connect the Gateway Connector into the Gateway

8

Power on the device. During the boot up process the device will flash Orange and Green for 1 second and then go off. This represents the device powering up.

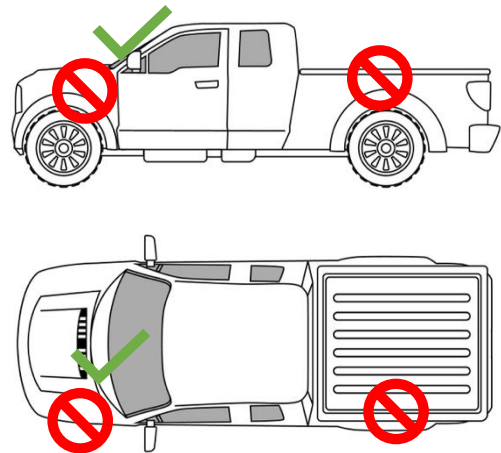
After 15 seconds both lights will come back.
Solid Orange means the device has established a connection with our server to report data

Once you see the **green light** on the gateway blinking, now you can start the engine

9



Place the gateway high in the dashboard. Make sure that the correct side is facing toward the sky.



DO NOT install the unit underneath metal as the signal will not penetrate and reach the satellite.

The device should be installed under the dashboard with a clear line of sight to the sky, and as close to the windshield as possible. Place device with barcode decal facing downward.

10



Before finalizing installation, contact Installation Verification at 631-670-1623 to verify the device is properly reporting to the IntelliShift Platform.

Support will be available, and instructions for after-hours check in, ie: Support is on call from 7am – 10 pm ET (7 days a week) Check with your company for confirmation if more times are available.

Important:

Installation performed by anyone other than a 12V certified technician or mechanic familiar with automotive 12V systems may result in damage to your vehicle or injury.



Before finalizing installation, contact Installation Verification at 631-670-1623 to verify the device is properly reporting to the IntelliShift Platform.

PTO Installations

The following document is a high-level walkthrough of the installation of the PTO connection to be performed on vehicles with an exterior PTO connection point.

Materials Needed (IntelliShift SKU Accy-800-PTOKit):

- 15' wire and loom
- 1 relay with relay harness
- 1 3amp Mini Fuse
- 1 Mini Fuse Holder 16g Wire
- 1 16g 3/8" Ring Terminal

Relay Wire Designation (if Signal is Positive Polarity ONLY):

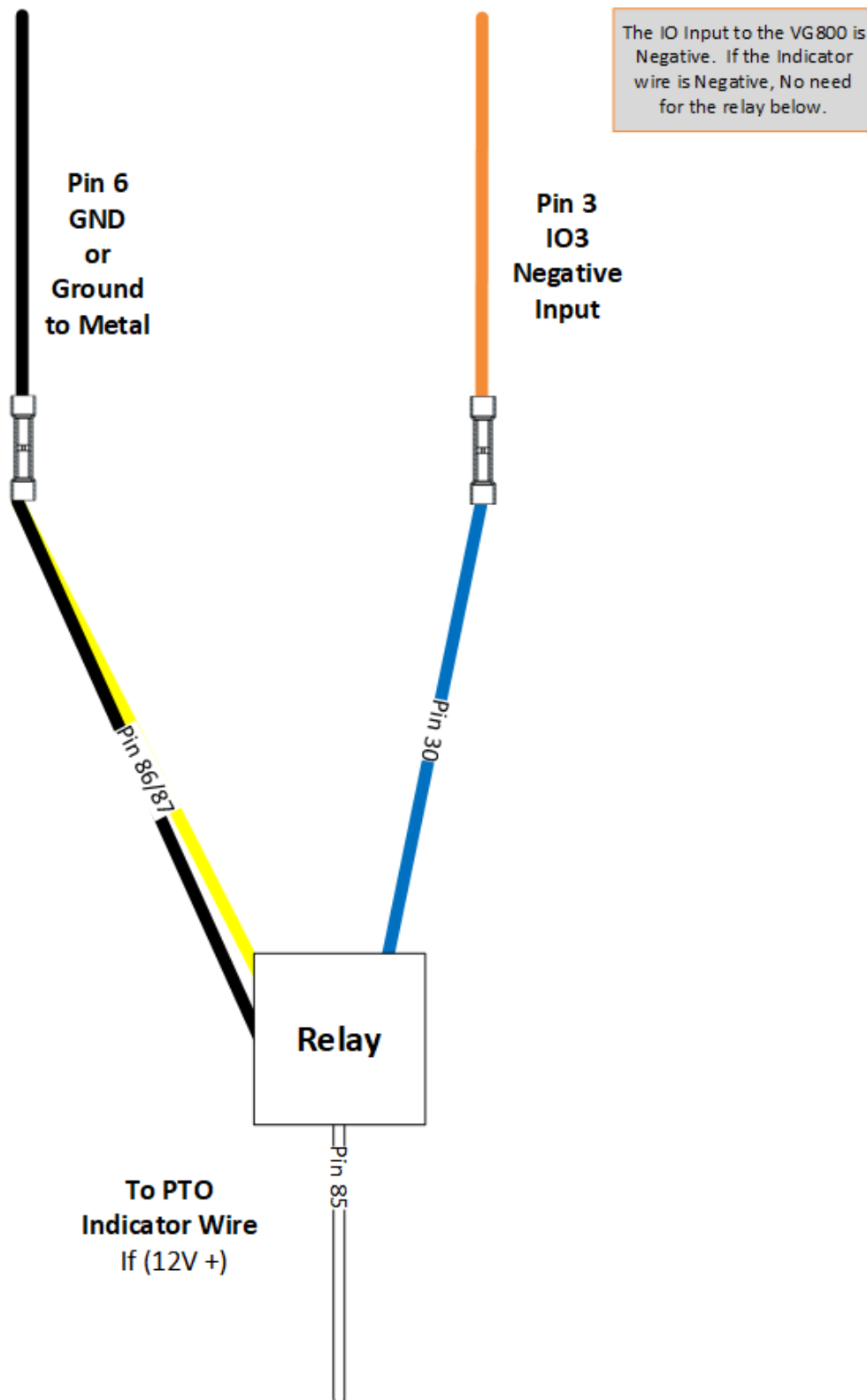
- 85 (White) - To fuse holder wire.
- 86 (Black) and 87 (Yellow) - To ground.
- 30 (Blue) – To IO Input.

IO Signal Wire (if Negative Polarity):

- Signal wire to IO3 (Wire label 3 on VG800 Harness)



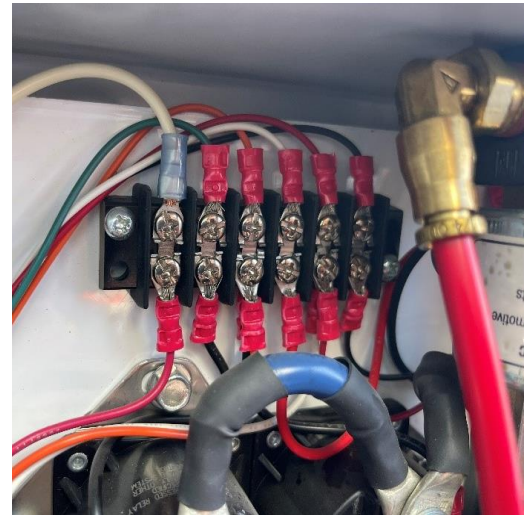
VG800 Wiring Schematic for IO with Relay



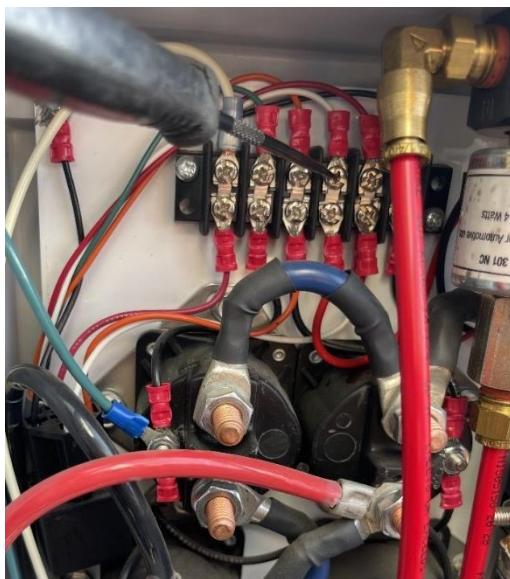
PTO Installation – Bobtail Style Trucks

1

Locate the junction box on the back of the trucks cab. The box will be screwed shut requiring a drill/screwdriver to access. It should be white with loomed wires coming from the bottom and leading underneath the cab.

2

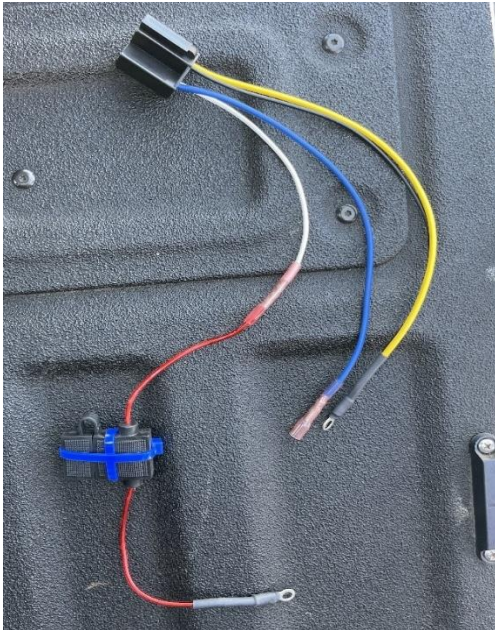
Once the box is open, look to the back of the box and find the terminal block of connections shown above.

3

Using a multimeter, verify PTO signal on one of these screwed down connections. It may not be the same position as shown above.

4

When activated, the PTO trigger is High (12VDC) as seen above.

5

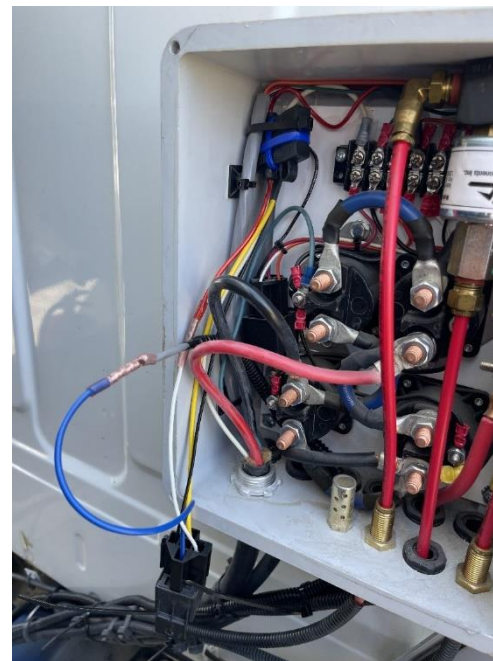
Above is the relay configuration. Use the relay to switch the signal from Positive to Negative. Use an inline fuse holder to protect the vehicle. Zip-tie the fuse to the holder to ensure that it is secure.

6

Connect the fuse holder to the PTO's Positive output.

7

Locate the access point on the bottom of the junction box enclosure. This is where you will feed the line from your relay.

8

Extend the signal wire through the access point so that it can be routed into the cab.

9

Secure the Relay and wiring. Care must be taken when closing the lid. Start screws by hand and don't over tighten with impact.

10

Run the wiring with existing wires out of the junction box and into the channel that leads under the cab with other wiring. Ensure that wiring outside of the box and cab is secured and loomed. This wiring will be exposed to the elements and must be protected.

11

Run the wire under the cab to the access point on the floor of the cab. The access into cab is located below the floor mat.

12

Using your tools, open the access point under the floor mat to feed the wire into the cab of the truck.

13

Connect your wire from the relay to LOW (Negative) **input 3** on the IntelliShift DG800 device.



Installation of your PTO Indicator Wire should be performed by a 12V certified technician or mechanic familiar with automotive 12V systems.

Troubleshooting:

We are constantly testing and applying firmware changes to provide the best experience possible. Upon installation, the device may need a firmware update, here are the light sequences that the device displays while updating

- Device alternating orange and green light (one light on, one light off, every 1 second)
- This typically takes 3-5 minutes to complete. Once done, the device will operate as normal.
- No Orange Light or No Green Light: The device may be stuck in a boot process, please hit the reset button, located next to the antenna/USB port on the device. Once pressed, the device will reboot and try to re-establish the connection. If the device is still not showing it's connected, please contact our Customer Support department.